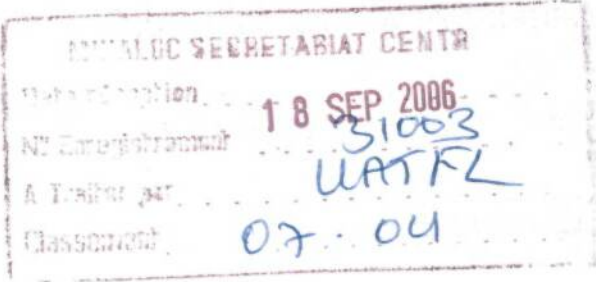


REPUBLIKA Y'U RWANDA

Kigali, kuwa 15/9/2006



UMUJYI WA KIGALI
AKARERE KA NYARUGENGE
Ref: 4339/07.01.01



Madamu Umuyobozi w'Umujyi wa Kigali
KIGALI.

Impamvu: Ishyirwa mu bikorwa
ry'imihigo y'Akarere.

Madamu Muyobozi w'Umujyi wa Kigali,

Nejewe no kubagezeho inyandiko zigaragaza uko imihigo y'Akarere ka Nyarugenge yagiye ishyirwa mu bikorwa n'abayobozi ba za "Unites" nk'uko babigaragarije abagize Inama Njyanama y'Akarere ka Nyarugenge kuwa 10 Nzeri 2006, bakaba barishimiye ibimaze kugerwaho.

Tubashimiye inama zanyu zidufasha kugera kuri byinshi byiza.

Mugire amahoro.

MUGEMA Olivier

Umuyobozi w'Agateganyo w'Akarere
ka Nyarugenge



Bimenyeshejwe :

Nyakubahwa Minisitiri w'Ubutegetsi bw'Igihugu, Imibereho Myiza, Amajyambere Rusange n'Imibereho Myiza y'Abaturanyi
KIGALI.

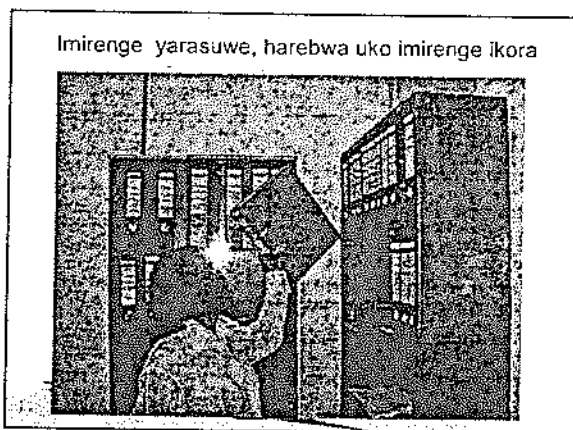
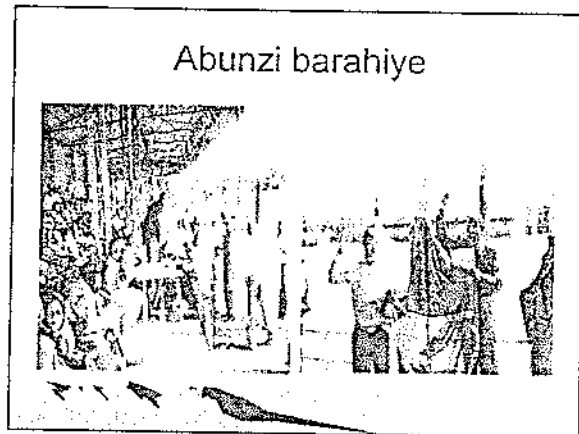
IBYINGENZI BIMAZE KUGERWAHO

Akarere ka NYARUGENGE:
Unité y' imiyoborese Myiza n'ubutegetsi
Nkurunziza Alexis

IBYINGENZI BIMAZE KUGERWAHO

Mu rwego rw'ubuyobozi bw'inzego z'ibanze

TARGET Y'AKARERE	IBYAKOZWE
100% by'inzego z'ibanze zizaba zatowe kandi zikora neza	100% y'inzego z'ibanze zaratowe kandi zirakora. Igikenewe, nuko abazigize bahabwa amahugurwa kugirango barushaho gukora neza. Inama Njyanama y'akarere yafashe ibyemezo 36 muri byo 35 byashyizwe mu bikorwa kimwe nicyo kitari cyashyirwa mu bikorwa.



Mu rwego rw'inkiko gacaca:

TARGET Y'AKARERE	IBYAKOZWE
85 % by'Abaturage bitabira inkiko gacaca kandi imanza zatangiye kuburanishwa.	57% nibwo bitabiraga inkiko Gacaca mu gihe cy'ikusanya makuru. Imirimo y'iburanisha yatangiye kuwa 15/07/2006 kugeza ubu hamaze kuburanishwa imanza ku rwego rw'imirenge.

Uko imanza zaciwe

Ababuranye	abasomewe	Abahawe TIG	Ababayabere
107	94	16	12



Mu rwego rw'Umuganda:

TARGET Y'AKARERE	IBYAKOZWE
85% by'Abaturage bitabira umuganda bafite ibikoresho bikenewe	62% nibo bitabira Umuganda. Hakoze *imirwanyanyasuri kuri mont KIGALI ha 4 *Isuku ku mihanda.

Ibikorwa by'umuganda nuko witabirwa



Mu rwego rw'amadini:

TARGET Y'AKARERE	IBYAKOZWE
Amadini akorera mu karere arazwi kandi hashyizweho ihuriro n'imikorere myiza	Amadini akorera mu yarabaruwe yose ni 136 hakoze inama iyahuza n'Akarere hashyizweho komite igena imikorere yayo n'Akarere

Mu rwego rw'abacitse ku icumu batishoboye:

TARGET Y'AKARERE	IBYAKOZWE
Amazu 50 yubakiye abacitse kw'icumu rya jenocide batishoboye mu karere	-Ibibanza byo kubakira abatishoboye byarabonetse -Hakoze umushinga wo kubaka amazu 100. Hakoze fundraising yo gushaka amafaranga yo kubaka havamo inkunga 181.000.000frw ayo FARG yemeye yarayatanze angana na 93.000.000frw. T.I.G yemeye gufasha mu gikorwa cyo kubaka, Hatangajwe isoko ryo kugura ibikoresho.

suite

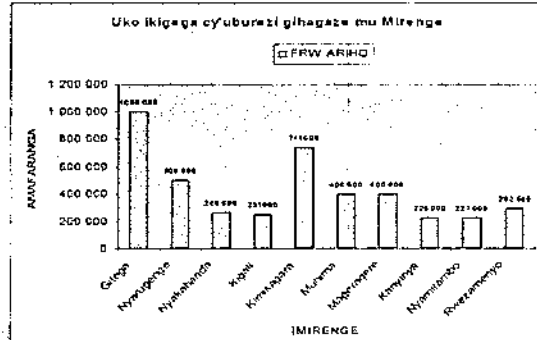
- Amazu 32 muri site y'Akumunigo yaruzuye 18 ari muri fondation



Uko abacitse kw'icumu bafashijwe

Inkunga yatanzwe	Amafaranga yatanzwe
Inkunga y'ingoboka	20.999.418 frw
Ibikoresho by'ishuri na ticket	8.160.050frw
Gusana	2.193.300frw

Mu rwego rw'ikigega cy'uburezi:



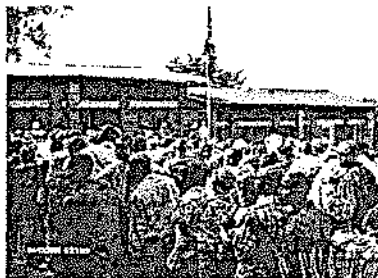
Kurihira abana amashuri

- Mu mwaka 2006 harihwe abana 1500 bitwara amafaranga 45.000.000 frw ku mwaka wose

Mu rwego rwa Gahunda za Leta:

TARGET Y'AKARERE	IBYAKOZWE
80% by'Abaturage bitabira gahunda za leta	Abaturage bitabira gahunda zinyuranye za leta ndetse n'Iminsi mikuru. *AMATORA *UMUGANDA *GACACA *IMINSI MIKURU

Abaturage bitabiriye amatora y'umudugudu



Abaturage bitabiriye umunsi wo kwibohozza



Mu rwego rw'ibibazo by'abaturage:

TARGET Y'AKARERE	IBYAKOZWE
85% by'ibibazo by'Abaturage byakemuwe	Hakiriwe ibibazo by'abaturage bijyanye n'akarengane, ubwambuzi n'ibindi byakirirwa mu karere ndetse no mu mirenganya bicyemurwa ku buryo bukurikira:

Uko ibibazo byakemuwe

Urwego rwakiriye ikibazo	Ibibazo byakiriwe	ibyakemuwe	Ibyoherejwe ahandi	ibitaracyemurwa
Akarere	76	42	7	27
Muhima	197	180	10	-
Nyarugenge	102	82	20	-
Gitega	45	43	-	2
Kanyinya	65	48	10	7

suite

Mageragere	99	90	-	9
Kigali	291	263	28	
Nyamirambo	250	205	15	30
Rwezamenyo	248	208	20	-
Kimisagara	166	163	3	-
Nyakabanda	300	290	10	-

Uko ababyeyi bitabiriye kwandikisha abana bavutse

Umurenge	Abana banditswe
Nyarugenge	142
Gitega	120
Muhima	12
Kanyinya	158
Kimisagara	14

suite

Nyakabanda	14
Nyamirambo	154
Rwezamenyo	35
Kigali	201
Mageragere	382

Uko abaturage bitabiriye gusezerana imbere y'Amategeko

Umurenge	Umubare w'abasezeranye
nyarugenge	501
gitega	16
muhima	94
kanyinya	147
kimisagara	74

suite

Nyakabanda	154
Nyamirambo	70
Rwezamenyo	21
Kigali	42
Mageragere	164

Mu rwego ry'abatishoboye:

TARGET Y'AKARERE	IBYAKOZWE
Abatishoboye mu kerere bose barazwi	Habaruwe abatishoboye bacyitse kw'icumu rya jenocide mu karere bakaba ari 9663 Abandi batishoboye ibarura rirakorwa mu mirengi.

Komite ya TIG iriho kandi irakora

TARGET Y'AKARERE	IBYAKOZWE
Komite iriho kandi irakora	Komite iriho yaranahuguwe

MURAKOZE

IBIMAZE KUGERWAHO MU ITERAMBERE RY'UBUKUNGU

Bishingiye ku Mihigo Akarere kagiranye
na Nyakubahwa Perezida wa Repubilika

NSABIMANA Desire
Umuyobozi w'Igenamigambi,
Iterambere ry'Ubukungu n'Umurimo

Nzeri, 2006

I. Imiterere y'ubuyobozi

Unite ifite amashami y'imirimo akurikira:

1. Ishami rishinzwe ubuhinzi n'ubworozi
2. Ishami rishinzwe Igenamigambi, gukusanya imibare no gukurikirana imishinga
3. Ishami rishinzwe amakoperative, ubucuruzi, ubukerarugendo n'ishoramari

Ibikorwa bikubiye muri ayo mashami
bihuzwa n'ubuyobozi bwa Unite.

Ubu Unité ikaba ifite abakozi 2 n'undi umwe ukora
bunyakiraka; Ushinzwe ubuhinzi n'ubworozi
ntaraboneka kuva mu kwa mbere 2006.

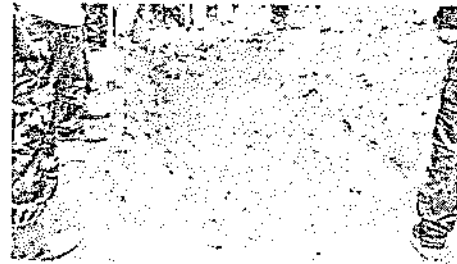
IBIMAZE KUGERWAHO MU ITERAMBERE RY'UBUKUNGU

I.1 Ubuhinzi n'Ubworozi:

I.1.1 Guhanga Ha 12 z'imurwanyasuri kuri
Mont Kigali, hamaze guhangwa Ha 4:
bivuga 1/3.

Inkunga yo gukora Ha 40 yarabonetse,
isoko ryaratanzwe, Umujyi wandikiwe
usabwa uburenganzira kuri raporo kugira
ngo Rwiyemezamirimo atangire ako kazi.

urugero rw'umurwanyasuri wahanzwe
andi uzakorwa n'aho hasigaye Ha 40



Habaruwe ubuso : 50% by'ahasanzweho
imirwanyasuri kwasibuwe kuri 35.4%.

	Ubuso busanzweho imirwanyasuri	Ubuso bumaze gusiburwa	% yahatunganyijwe
Umurenge			
Mageragere	2000m	1000m	50
Kigali	2500m	4000m	160
Kanyinya	123,4ha	20ha	16,4
Kimisagara	2,1km	1km	0,49
Nyamirambo	11km	2km	18,2

4 ha z'amaterasi zahanzwe mu Murenge wa Kanyinya

Hashatswe financement yo gukora amaterase
mu Murenge itatu ariyo:

- Kanyinya :25 ha zivuye kuri 4 ha;
- Kigali : 40 ha
- Mageragere: 100 ha. Ibitabo bijyanye
n'itangwa ry'amasoko byakozwe, inkunga ya
CDF iremezwa, byacye no mu
binyamakuru ariko byemejwe ko byakorwa
mu buryo bwa regie cyangwa PDL-HIMO. Iyo
approche niyo turigutegura: ikazatangirana
na 45ha mu Murenge wa Mageragere kuri
18.09.2006.

Gufata neza pepiniere z'ingemwe 500.000

Ingemwe

Umurenge	Ingemwe twahawe na MINITER RE	Ingemwe zaguzwe	Ingemwe z'amashyi rahamwe	Igiteranyo
Nyarugenge	70,5kg			
Nyamirambo	58,7kg			
Nyakabanda	70kg			
Rwezamenyo	76			
Kimisagara	54,9			
Gitega	61,5		32000	
Muhima	79			
Kigali	71,9		32000	
Kanyinya	78		32000	
Mageragere	70,5		32000	
Igiteranyo	700kg			

Intego: Kugira abahinzi borozi batantu ntangarugero

Umurenge	Abahinzi ntangarugero	Aborozi ntangarugero
Nyarugenge	1	4
Nyamirambo	0	5
Nyakabanda	0	3
Rwezamenyo	0	0
Kimisagara	0	3
Gitega	1	1
Muhima	0	1
Kigali	1	3
Kanyinya	1	7
Mageragere	0	4
Igiteranyo	4	31

Ibindi byakozwe mu rwego rw'ubworozi

- Habaruwe amatungo yose ari mu Karere

Umurenge	Inka za kijyambere	Inka za gihanga	Ihene	Volaiti	ingurube
Nyarugenge	36	90	25	232	0
Nyamirambo	230		633	1342	50
Nyakabanda	16		241	522	
Rwezamenyo					
Kimisagara	34		270	742	
Gitega	16		54	664	
Muhima					
Kigali	76		152	1624	147
Kanyinya	182	665	2576		28
Mageragere					
Igiteranyo					

Ibindi byakozwe

- Kubarura abaturage bazahabwa inka 100 za MINAGRI
- Kubarura abaturage bafite ubushobozi MINAGRI yafasha kubona inka
- Kubarura abaturage bazahabwa ingurube 150 ku nkunga ya TWUBAKANE

Urugero rw'inka yorowe bwa kijyambere



Kwita ku bihingwa byera mu Karere

- Imirenge ifite aho guhinga (3)
 - Hitawe ku gihingwa cy'inyanya kuri 20 ha mu Murenge wa Mageragere. Iki gishanga gifasha abaturage 350 bibumbiye mu mashyirahamwe 8. Iki gishanga cyagabanyijwemo ibice kuko buri muturage ahabwa m 25 kuri m 25.
 - Ku musaruro wa buri cyumweru umuturage abasha kwinjiza 20.000 Frw kandi agasarura mu gihe cy'amezi atatu
 - Muri Kanyinya: igice cyegereye igishanga hitawe ku gihingwa cy'igisheke kuko kuri ha umuturage ku mwaka abona: 1.600.000 Frw, ahandi

Igihingwa cy'inyanya



Imirenge y'Umujyi

- Abaturage bakanguriwe igihingwa cy'ibihumyo
- Mu Murenge wa Gitega hari ishyirahamwe ry'abadamu risarura n'aho andi 3 ari gutegurirwa amahugurwa
- Mu Murenge wa Kimisagara hari amashyirahamwe 2 asarura nibura ibiro 10 kg buri minsi ibiri.

I.2 Amakoperative +Ubukerarugendo+Ishoramari

- Amakoperative:
 - Habaruwe amashyirahamwe n'amakoperative biri mu Mirenge 2 ku 10;
 - Hahuguwe abanyamuryango b'amashyirahamwe ku buryo bukurikira:
Isoko rya Rwezamenyo: 53
Abafite ubwandu bwa sida: amashyirahamwe yabo yarahuguwe mu minsi 2.

Ibindi bimaze gukorwa Ibyemezo bimaze gutangwa:

- Certificat d'agreement: 22
- Certificat de collaboration: 6
- Ibibazo by'ingutu byakiriwe: 4
- Ibibazo byakemutse: 3
- Ibyashyikirijwe inkiko: 1
- Abaturage twakiriye: 73

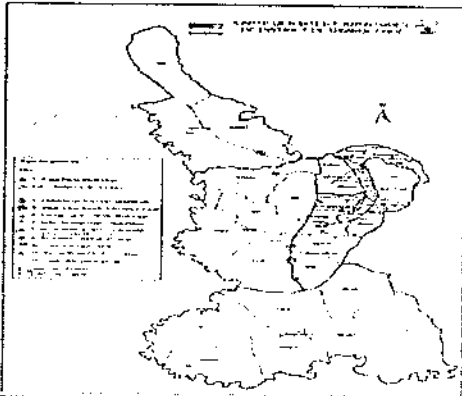
Ubukerarugendo

Identification des sites:
Site touristique ya Mwirire : (inzu izajya yakirirwamo abagenzi) hakoze reception provisoire,
-Igiti giteye amatsiko cyo mu bigabiro bya Rwabugiri/Rugarama
-Umusozi wa Mwirire/Rugarama
-Mera neza/Katabaro
-Ibigabiro bya Rwabugiri/Mwendo
-Mu kona ka mashyoza (aho nyabarongo ihurira n'akanyaru)/Runzenze
-Ikirenge cya Ruganzu/Ntungamo
-Akana ka Mageragere/Ntungamo
-Muganza/Kimisagara
-Ishyamba rya Gasharu/Gasharu
-Ibuye rihetse irindi/Nyabugogo
-Inzu ya RICHARD KANDT/Akabahizi
-Ishyamba rya Nyamweru/Kanyinya
-Gereza ya Kigali bakunze kwita 1930 /Kabeza

AHANTU NYABURANGA HAMAZE GUTUNGANYWA



Carte touristique ya Nyarugenge



Ishoramari

-Ibikwiye gushorwamo imari: Habaruwe ibi bikurikira

UBUHINZI N'UBWOROZI

Dushingiye ku mibare yagaragaye, dusanga Akarere katari kihaza mu biribwa bityo hakaba hakenewe gushyira imbaraga muri ibi bikurikira

- Guhinga Ibisheke n'Inyanya mu bishanga bya Mageragere, Kigali na Kanyinya
- Gutera ishyamba ku misozi yanamye ya Mwirire, Mageragere na Kanyinya

- Gutera ibiti byera imbuto ku mihanda, ku mashuri no muri za « espaces vertes » ziteganyijwe mu midugudu
- Ubworozi bw'amatungo magufi nk'inkoko, ihene, ingurube n'inkwavu
- Ubworozi bw'inka za kijyambere

AMAZI, MINE N'INGUFU

- Gutunganya NYIRAMUGENGERI yo mu bishanga bya Mageragere, Kigali na Kanyinya
- Gutunganya amazi y'isoko ya Kigali ahitwa kw'ibuye rihetse irindi
- Gutunganya umucanga wo mu mugezi wa nyabarongo na nyabugogo
- Gukora ibyuma bibyaza imirasire y'izuba ingufu z'amashyamba

-Imurikagurisha:

Imurikagurisha ry'inka za kijyambere (JERESI /FRISONE) zaratoranijwe mu Tugari twose n'Imirenge.

INGANDA N'UBUKORIKORI

- Gukusanya za mudasobwa zapfuye hirya no hino mu bigo bitandukanye ibizigize bizima bikegeranywa mu gukora izindi nzima ziciriritse zakoresheya muri secretariat no kwigisha abana
- Gutunganya ibishingwe yakusaniywe n'amashyirahamwe y'isuku
- Kwubaka za fonderie zikora ibyuma bitandukanye hakoreshejwe umuriro wa za briquettes zikomoka mu bishingwe
- Kwubaka uruganda rukora emballage zikomoka mu mpapuro zatoranijwe mu bishingwe

(Ibikurikira)

- Kwubaka imireko ikoze mw'ibumba
- Gutunganya industrie chimique, mu ku byaza ibimera ZA ACIDE zitandukanye kugirango ifashe muri transformation y'ibiribwa
N'ibindi bikoreshe by'ibanze nk'isabune
- Gushinga ateliers modernes z'ububaji zikora ibintu bishobora kwoherezwa mu mahanga
- Kuboha uduseke tubereye amaso kandi duhagije isoko ryo mumahanga

INGANDA N'UBUKORIKORI (Ibikurikira)

UBUCURUZI

Gucuruza amakuru ashingye ku bucuruzi
Gucuruza ubumenyi n'ubushobozi(Commercialisation
des talents)
Gukora « Distribution y'ibiribwa » mu midugudu

UBUKERARUGENDO N'IMYIDAGADURO

Kwubaka inyubako za kinyarwanda ndetse na za
sculture cyangwa peinture zisobanura amateka y'
ahantu nyaburanga ho mu karere mu buryo bwo
kwakira ba mcyerarugendo
Kwubaka icyumba cya cinema mbera byose muri
centre commercial ya NYARUGENGE

II. IGENAMIGAMBI

Gutegura PDD: Iyi ntirakorwa kuko
igomba gushingira kuri EDPRS ariko

- hakoze isuzumwa rya PRSP1 nk'uko byari byasabwe;
- Hagaragajwe ibikwiye kwitabwaho muri 2007
- Hakoze evaluation y'ibimaze kugerwaho mu mihigo Akarere kiyemeje

MTEF 2007-2009

- Yarateguwe itangwaho ibitekerezo n'inzego zinyuranye: Abahagarariye Utugari, yaganiriweho ku rwego rw'Uturere tugize VK, Komisiyo y'ubukungu y'inama Njyanama namwe mugize Inama Njyanama y'Akarere muzayishyikirizwa kugira ngo muyitangeho ibitekerezo;
- Buri Murenge washoboye kugaragaza ibikorwa bizitabwaho mu gihe cy'imyaka itatu kandi bikorerwa ingengo y'imari

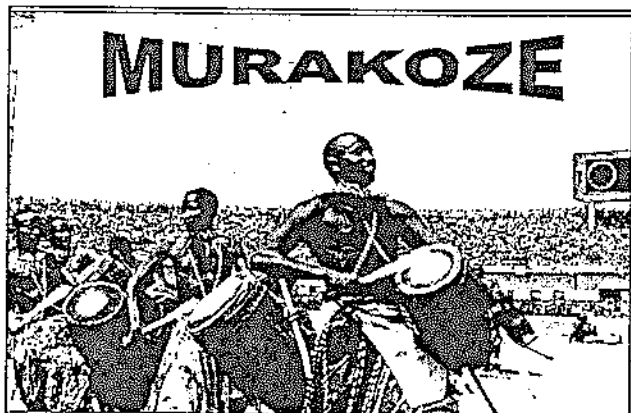
Ku bijyanye na gahunda + raporo y'ibikorwa

- Gahunda y'ibikorwa: iya 2006 yarateguwe ikurwamo ibizakorwa muri gihembwe, buri kwezi na buri cyumweru. MTEF imaze kwemezwa hazategurwa gahunda y'ibikorwa ya 2007 irambuye
- Raporo y'ibikorwa: Buri kwezi na buri gihembwe irategurwa; na raporo y'isuzuma ry'imihigo

III. Umurimo

- Habaruwe ibigo biri mu Karere, abakozi ndetse n'amafaranga binjiza mu ngo zabo ku mwaka
- Imishinga y'Akarere yagiye iha akazi abaturage no kumenya amafaranga bagiyeye batahana mu ngo zabo ntabwo kirarangira:
 - Mpazi:
 - Imihanda yakozwe:
 - Ubuhinzi bw'inyanya:
 - Ubuhinzi bw'ibisheke:
 - Umushinga w'amazi Mageragere:
 - Umushinga w'amazi Kanyinya:
 - Isuku ku mihanda:

MURAKOZE



**RAPORO Y'ISHYIRWA MU
BIKORWA RY'IMIHIHO**

UNITE Y'UBUKUNGU

**IBYARI BITEGANIJWE N'UKO
BIMAZE KUGERWAHO**

A. Kubarura Abasoreshwa: Igikorwa cy'ibarura cyaratangijwe mu mirenge 7 kuri 10 igize Akarere ka Nyarugenge. Amafishe amaze kubarurwa ari mu mbonerahamwe zikurikira.

IMBONERAHAMWE Y'AMAFISHI AMAZE KUBARURWA

NO	UMURENGE	AKAGALI	UMUBARE WAMAFISHI YARANGIYE
1	GTEGA	AKABEZA	142
		AKABAHWA	137
		KIGARAWA	126
		KANYANSE	146
		GACYAKO	156
		KURA	244
	SUB-TOTAL		1,061
2	NYAMRAMBO	RUGARANA	318
		GASHARU	277
		MURENA	155
		CYAGURIRA	107
	SUB-TOTAL		827

3	NYARUGENGE	KIYOVU	120
		RWAMPALA	61
		BIRYOGO	299
		AGATARE	100
		SUB-TOTAL	580
4	KIMISAGARA	KAMUHOZA	229
		KATABARO	151
		KIMISAGARA	232
	SUB-TOTAL	612	
5	RWEZAMENYO	RWEZAMENYO 1	445
		SUB-TOTAL	445

6	MUHIMA	NYABUGOGO	57
		AMAHORO	86
		KABEZA	103
		TETERO	54
		UBUMWE	50
		RUGENGE	36
		KABASENGEREZI	41
	SUB-TOTAL	427	
7	NYAKABANDA	NYAKABANDA 1	371
		NYAKABANDA 2	187
		MUNAKIRA 1	270
		MUNANIRA 2	179
	SUB-TOTAL	1,007	
	GRAND-TOTAL	4,959	

B. Gushaka inyandiko zikoreshwa mu kwinjiza imisoro n'amahoro: Zose zarabonetse kandi zibonekera ku gihe nk'uko byari biteganijwe.

C. Gutegura amatangazo: Amatangazo agamije gukangurira abaturage kwitabira igikorwa k'isoresha n'ibindi bikorwa bijyanye n'isoresha yose yaratanzwe.

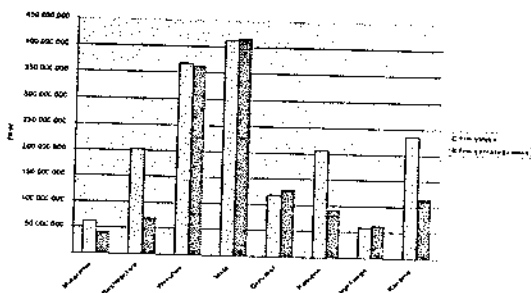
D. Gutegura no kuyobora inama z'abasoreshwa

Imbonerahamwe igaragaza uko Inama zakozwe mu Mirenge

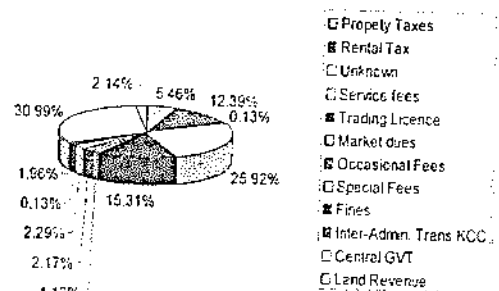
UMURENGE	INAMA ZAKOZWE
Rwezamengo	1
Nyakabanda	1
Kimisagara	1
Kigali	1
Nyamirambo	2
Igitarambo	6

E. Kwinjiza amafaranga angana na 1.827.059.361Frw

FRW YINJIYE UGERERANYE N'AYARI ATEGANIWE



AMAFARANGA YINJIYE N'INKOMOKO YAYO AYINJIYE YOSE: 1.862.866.623



F. Kugera ku basoreshwa 8.632

• "Recouvrement" zihoraho zirakorwa kugira ngo buri musoreshwa wese agerweho

Imbonerahamwe igaragaza uko "recouvrement" zakozwe mu Mirenge

UMURENGE	RECOUVREMENTS ZAKOZWE
Nyarugenge	2
Muhima	2
Kigali	1
Kimisagara	1
Nyakabanda	1
Rwezamengo	1
Nyamirambo	1
IGITERANYO	9

MURAKOZE

UNITE Y'UBUTAKA,
IMITURIRE,
IMITUNGANYIRIZE Y'UMUJYI
N'IBIKORWAREMEZO



IMIHIHO Y'UMWAKA WA 2006

IBIKORWAREMEZO

- Kubarura imihanda y'akarere no kwerekana imiterere yayo:
 - Mu bufatanye n'Umujyi wa Kigali imihanda yatangiye kubarurwa igikorwa kikaba kigeze kure



- Gukora umuhanda uzengurutse igishanga cya Nyarufunzo
 - Iki gikorwa ntikirashoboka bitewe n'uko RSSP yagombaga kudufasha muri iki gikorwa yatinze gutanga inkunga yakigenewe.



- Gukurikirana iyubakwa ry'imihanda y'amabuye OKAPI - APACOPE CERCLE SPORTIF - 40
- Hakozwe ibaruramitungo y'abaturage batuye mu bwaguriro bw'imihanda Cercle Sportif - 40 na OKAPI - APACOPE; ikaba yarahawe agaciro ka 412 067 286 Frw,
 - Mu gihe kitarenze ukwezi kumwe umihanda yombi iraba itangiye gukorwa



3.2KM za ruhurura ya Mpazi zubatswe neza:

- Hamaze kubakwa « parois/murs de soutènement » kuri icyo ruhurura ahareshya na 1.2km
- Hamaze gushyirwa itaka ryo kugabanya « profondeur » ikagera kuri 2m ahareshya na 2.4km



IMITURIRE

- Gutegura ibibanza biciriritse 1000 mu murenge wa Nyamirambo:
 - Uyu mushinga tuzawufashwamo na PIGU kandi waremewe. Expropriation yarakozwe. Ubu harakorwa « translation » ya DAO.
- Ibibanza 1000 bituwe bizahabwa ibyangombwa:
 - Iki gikorwa ntikirashoboka bitewe n'uko iteka rishyiraho ibiro by'ubutaka n'imikorere yaryo ritarasohoka